

640 FLY



The 640 FLY builds on the ground-breaking success of the 500 series to bring even more innovations to the flybridge luxury yacht segment. This transformer model will follow a new design path to allow for bigger volume and better space distribution, all while maintaining the great exterior appearance Galeon models are known for.

Outside, the aft cockpit dining area holds eight people who can enjoy an entertainment system with a flat screen TV sliding up from the kitchen top, all while protected from the elements by the electric aft sunshade. Further back,

find the hydraulic bath platform capable of handling all water paraphernalia and a convenient access to a large skipper cabin.

The top deck is enlarged to offer a generous dining space, a full-sized bar and plenty of lounge space surrounding the steering console. The bow deck area can be approached by the revolutionary, electric front window entrance revealing two separate movable sofas with integrated foldable tables for sun-deck purpose. Serve the area from a nearby wine bar to further impress your guests.

Everyone's favorite Beach Mode makes a welcome reappearance, fitted with six-meter-long balconies with partially glazed floors and a breakfast bar on both sides. Equip the cockpit area with a rotating sofa option with a 3,2m tender garage below to completely separate your yacht from the pack.

Inside find extensive lounge and dinner areas with openable side windows next to the bar and steering station. Thanks to the innovatory, two-way stair system, a three full-beam cabin layout was made possible for extra privacy and comfort. A four-cabin layout is sure to please enlarged families and charter enthusiasts. Embrace the future of luxury yachts with the incredible Galeon 640 FLY!

The 640 FLY is a game changer, once again offering solutions never before seen in this class. This transformer yacht is revolutionizing the segment with its innovative approach to layout and space distribution





640 FLY - Elongated flybridge

Select this version for extra space on the top deck that will rival the best in class



The carbon construction of the top deck and bimini allows for better weight distribution —



Incredible space on all three decks —



640SKY

Beach mode

The 640 comes equipped with the revolutionary Beach Mode option extending the usable space in the cockpit



Hydraulic platform and access to the crew cabin



640 FLY - Standard flybridge

Choose the standard top deck size for a more dynamic and sporty profile



Easy bow access and back rests allow guests to sit in front during cruising



The hydraulic platform will easily fit most water paraphernalia



640 FLY - Beach mode

The amazing Beach mode comes in various shapes and sizes, notice the sea-through panels on the 640 - smart!





640 FLY - Lati Grey

A large living area with a proper kitchen will please all guests on board the 640



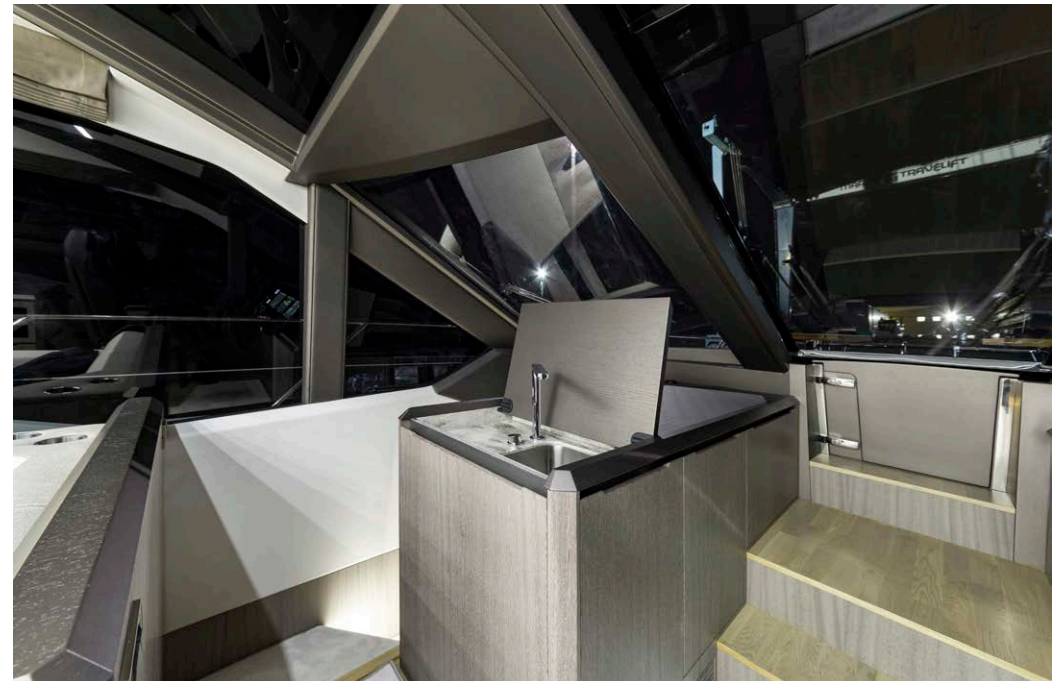
Both port and starboard windows slide forward



Entertainment area with a large pop-up TV



A high-tech helm with two sport seats

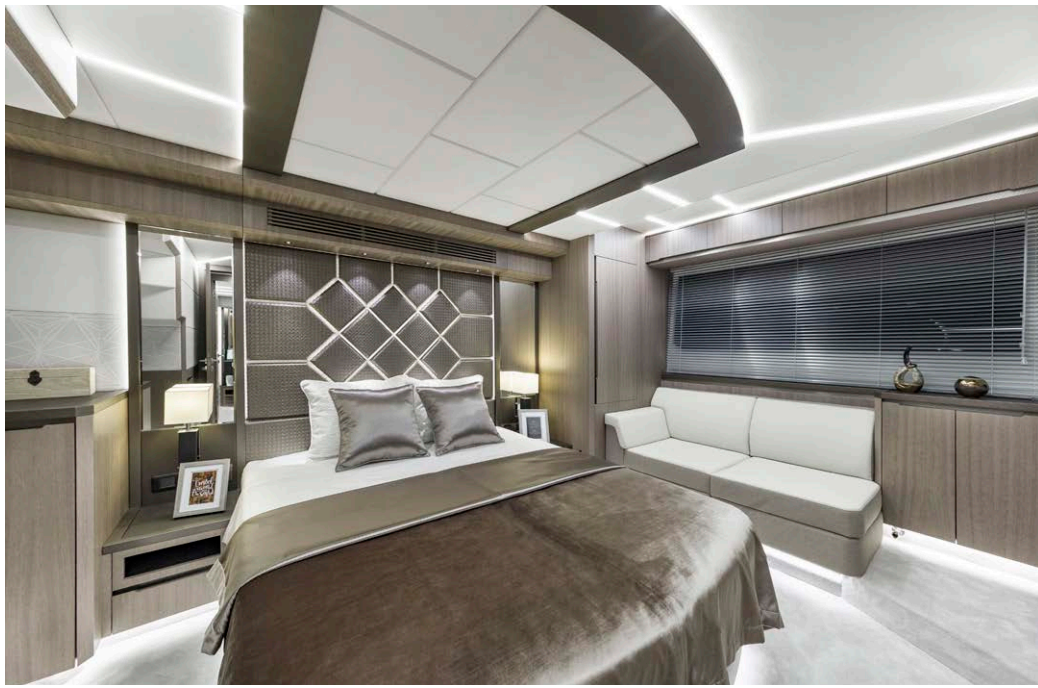


The middle panel of the front window can be opened for easy bow access



640 FLY - Lati Grey

Find three master sized cabin down below,
all with private bathrooms



Luxurious finish and incredible volume down below



Guest cabin holds plenty of storage



High quality fixtures in all three bathrooms



Large windows for those incredible views...

Super
Master layout
640 FLY



— The super master layout offers a larger midship cabin



— Separate head and shower in the super master setup



— A smaller, twin bed cabin



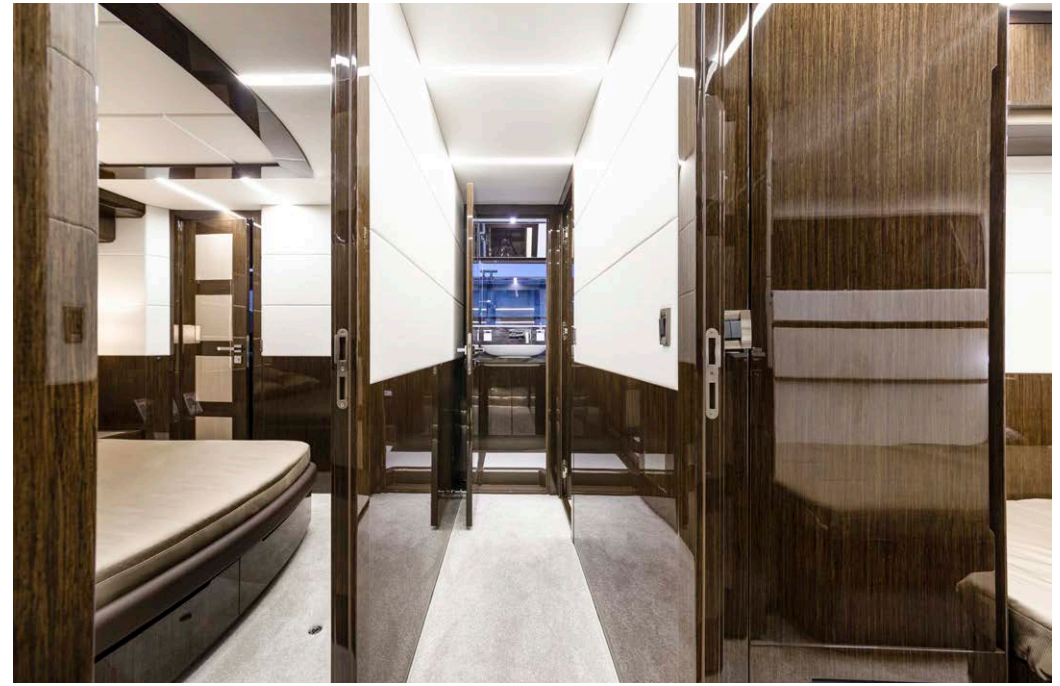
— Guest bathroom down below

Four cabin
charter option

640 FLY



Two large cabins and two smaller cabins are available in this setup



Midship access to three of the four cabins down below



Twin guest cabin will suit large families and charter guests



Two extra berths will come in handy on many occasions



— Extend the bow area thanks to sliding seats and tables



— The carbon bimini top can be opened with a touch of a button



— Even the back window can be opened to easily serve the wet area



— Cockpit area is vast with the Beach Mode open



640 FLY

TECHNICAL SPECIFICATION

Length of the hull	[m]	14.44
Length overall	[m]	16.20
Beam of the hull	[m]	4.40
Beam overall	[m]	4,46 / 6,00 ₄
Draft max ₁	[m]	0,99
Bridge clearance ₂	[m]	7,54
Height to transport	[m]	8,92
Fuel tank capacity	[dm ³]	2 x 1300
Water tank capacity	[dm ³]	800
Grey water tank	[dm ³]	270
Black water tank	[dm ³]	210
Mass of Light Craft Condition ₃	[kg]	34250
Maximum Load	[kg]	5500
Min. engine (-s) power	[kW/HP]	2 x 662 / 900
Max. engine (-s) power	[kW/HP]	2 x 882 / 1200
Crew limit		15
Category		B

₁ - without propellers ₂ - Max. height from water line at draft min. ₃ - minimum mass with base engines

₄ - with Beach mode, balconies down

**3RD GALEON
GENERATION**

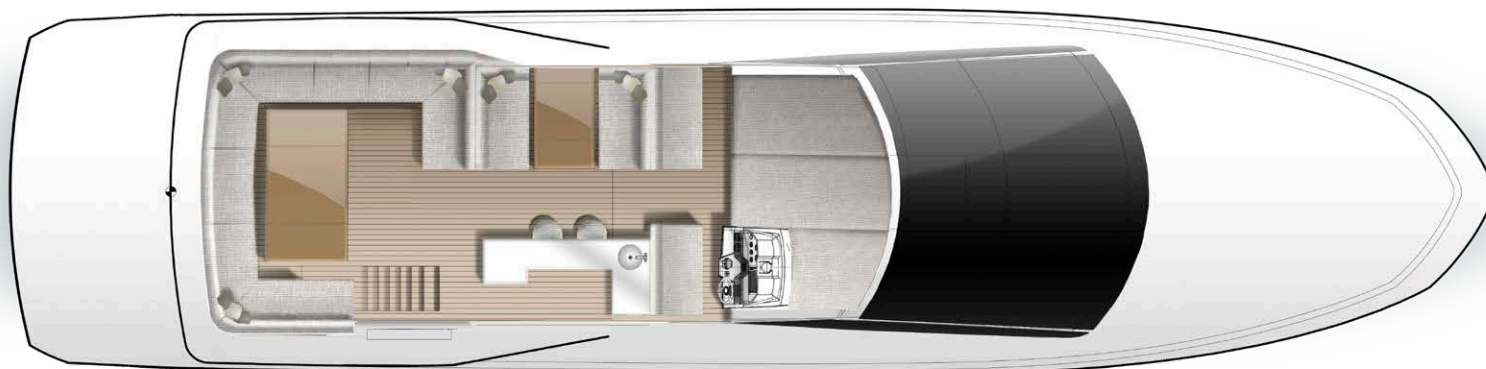
**TONY
CASTRO
YACHT DESIGN**

**VOLVO
PENTA**

MANI

The innovative front entrance provides unrestricted access to the bow

Flybridge



Standard seat,
Beach Mode open
ver. 1



Roto-seat,
Beach Mode closed
ver. 2



640 layouts

Three Master cabin layout

ver. 1



Super Master layout

ver. 2



Four cabin Charter layout

ver. 3





640 **FLY**





**THE GAME
CHANGER**